



Koombana Bay
SAILING CLUB



Season Programme

2019/2020

Anchorage Cove Bunbury WA

Phone: (08) 9791 3914

www.koombanabay.com



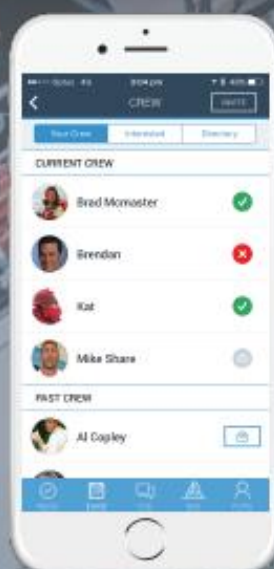


SAILCONNECT

STRUGGLE TO MAINTAIN & FIND CREW?

WANT TO SAIL MORE?

**FREE TO DOWNLOAD & USE,
SAILCONNECT SIMPLIFIES HOW
BOATS & CREW COMMUNICATE**



www.sailconnect.com



Download on the
App Store



GET IT ON
Google Play

SEPARATED BY OCEANS, CONNECTED BY PASSION

COMMODORES WELCOME

Once again thank you for the confidence you have placed in me as Commodore. I'm enthusiastic about the next few years and look forward to spending many happy hours at the Club.

The theme for the next season will be one of consolidation. Your Committee will be pursuing the following objectives over the next 12 months;

- Promoting juniors and sail training.
- Finalising acquisition and refurbishment of rescue boats.
- Finalising the business case for a Marina to a point where the club can make a decision about proceeding.
- Finalising the review of the club's strategic plan.
- Bedding down the new Constitution.
- Consolidating the business elements of the Club into a sustainable operational model.

The next year is going to be an extremely exciting one for the club and I look forward to your participation in club events.

Stuart Thompson

Commodore



Koombana Bay Sailing Club (Inc.)

Anchorage Cove (PO BOX 56) BUNBURY WA 6231

Telephone: Office/Bar/Venue Hire (08) 9791 3914

Web: www.koombanabay.com

PATRON: Don Punch (MLA)

VICE PATRON: Mayor Gary Brennan

MANAGEMENT COMMITTEE

COMMODORE	STUART THOMPSON	0408 932 079
	stuart@prioritymanagement.net.au	
IMMEDIATE PAST COMMODORE	JON BIRCH	0419 967 709
	jon@birchdesign.com.au	
VICE COMMODORE	IAN ANDERSON	0412 018 937
	cooe2.ian@gmail.com	
REAR COMMODORE SAILING	DARRIN TINLEY	0428 816 589
	escapekb9@gmail.com	
DINGHIES & TRAINING OFFICER	DAVID PILBEAM	0418 822 791
	djpstba@wn.com.au	
REAR COMMODORE BUSINESS	RUSSELL BATLEY	0419 937 207
	russell@batleyelectrics.com.au	
SECRETARY	GORDON KNIGHT	0478 200 221
	gpksailing@gmail.com	
HONORARY TREASURER	SHEREE FRENCH	0438 266 217
	shereecole21@hotmail.com	
MEMBERSHIP OFFICER	PENDING	

COMMITTEE

DAVID DOHERTY	0418 933 517
GREG JONES	0414 972 116
PHIL SLEE	0439 906 812
SARAH TWIGGER	0424 126 663

TRUSTEES

BRIAN ALLEN
MALCOM BRYANT
TIM LEE-STEERE

OFFICE MANAGEMENT

ADMINISTRATION	(08) 9791 3914
admin@koombanabay.com	
FUNCTIONS	0499 023 995
functions@koombanabay.com	

HOUSE AND GROUNDS MANAGEMENT

BOSUN	DAVID DOHERTY naturaliste45@gmail.com	0418 933 517
TWILIGHT REGISTRATIONS	PETER SWANSON	0408 066 372
SAFETY AUDITOR	PHIL TRUMAN philtruman904@gmail.com	0417 188 254
MOORINGS & DINGHY SHED	GREG JONES gregoryguyjones@gmail.com	0459 774 909
COMPOUND	DAVID DOHERTY naturaliste45@gmail.com	0418 933 517
NEWSLETTER/WEBSITE	SARAH TWIGGER kbscnews@gmail.com	0424 126 663
RACE CONTROL & MANAGEMENT	DARRIN TINLEY escapekb9@gmail.com	0428 816 589
RACE NOMINATIONS	JUDY TALBOT	(08) 9726 1236
	JEAN COWELL	(08) 9721 1237
HANDICAPPER	CLEVE ARMSTRONG	0407 775 914
TOWER	JEAN COWELL	(08) 9721 1237
TWILIGHT COORDINATOR	JEFF CLIFTON	(08) 9725 1994

CLASS CAPTAINS

DIVISION 1	PHIL TRUMAN	0417 188 254
DIVISION 2	RISHI OREGIONI	0418 461 825
DIVISION 3	MAL CRUICKSHANK	0488 386 688
JaM DIVISION	WARREN COWELL	(08) 9721 1237
CATS	WARREN DREW	0419 912 490
CHERUBS	NOELENE SNELLING	0420 522 744
JUNIORS	DAVID PILBEAM	0418 822 791
WEST COAST OUTRIGGERS	DEAN BAKER	0419 037 260
ROTARY SAIL INTO LIFE	COORDINATOR	sailintolife@gmail.com

WINCH OPERATORS

GREG JONES (Chief Operator)	0459 774 909
HARRY BEAVER	0417 931 768
TERRY O'CONNOR	0418 931 254
DAVID DOHERTY	0418 933 517
JON BIRCH	0419 967 709



THANK YOU TO OUR SPONSORS

Perkins

TAYCOT

Capel Vale

Priority Management

JB Sail Repairs

Chris Rowe & Co

Henty View Vineyard

Naturaliste Yachts & Chandlery

APH Contractors

Nara Training & Assessing

Avalon Sail Co

Batley Industrial Electrics

Brecken Health Care

Discovery Holiday Parks

City of Bunbury

Department of Local Government, Sport and Cultural Industries

Koombana Bay Sailing Club would like to thank all of this season's sponsors and urge all members to support the businesses which support us.



Department of
**Local Government, Sport
and Cultural Industries**

SEASON INTRO – REAR COMMODORE SAILING

An exciting and varied programme has been put together based on the feedback from last season. It has something for the 'hard core' crews and those who prefer a little less stress in their lives, and everyone in between.

Consistency racing starts on October 19, our first twilight is on October 23 and Opening Day is the weekend after on 26 October.

We are looking at new opportunities to lure fleets to our Club. In early November, the excitement machines of World sailing, the foiling Moths will visit for a weekend, the S80 (and now also S97) South West Championships will be held over the Australia Day weekend and we will host off the beach traveler series races and a junior State Titles.

Of course, not everyone likes serious racing and we look forward to relaxing twilights, some 'picnic' sailing and a few surprises.

The Committee has committed to the safety of sailing enormously over the last few months, refurbishing existing race management craft and purchasing a new unit to ensure we can look after our members and be in a position to attract visiting fleets and events.

The popular *Birch Design* Friday Twilight Series will run again in the New Year and we will be luring the ladies and juniors with the Enticer Series

A huge thanks goes out to our volunteers and sponsors who provide amazing support in so many ways. Without them, we don't have a Club and we thank you all for your past contribution and for the coming season.

KBSC is the place to be this summer!

Darrin Tinley

Rear Commodore Sailing



SEASON 2019/2020 – SAILING PROGRAMME AND INSTRUCTIONS

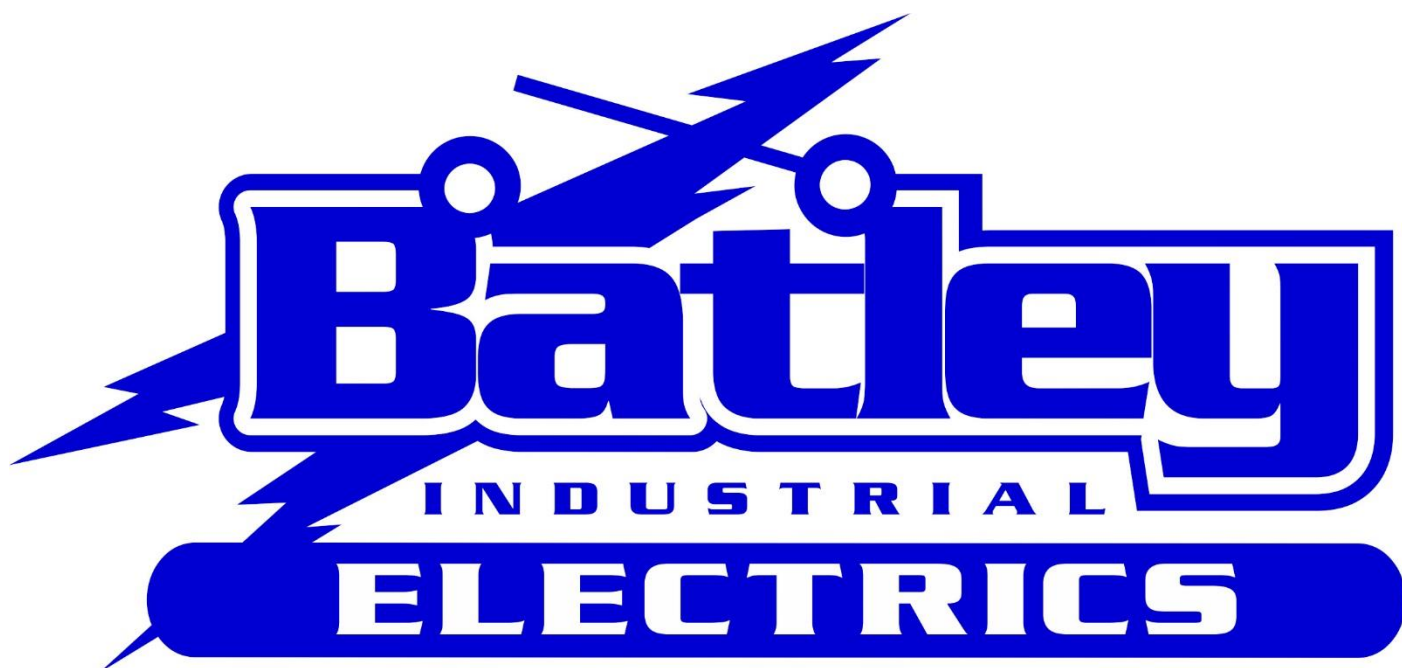
Objects of the Club:

“The objects of the Club shall be the promotion and encouragement of the sport of yachting generally, and racing between sailing yachts in particular, and the doing of all things incidental to or not inconsistent with the foregoing.”

Glossary:

Div 1	Larger boats, generally over 32 ft, including S97's and trimarans.
Div 2	Medium size boats generally under 32 ft.
Div 3	Smaller boats, generally trailer-able, around 20 ft
JaM	Jib and Mainsail Only Division
Cats	NACRA catamarans and Mixed Catamarans
OTB	Off the Beach boats - all centerboard boats that are launched from the beach.

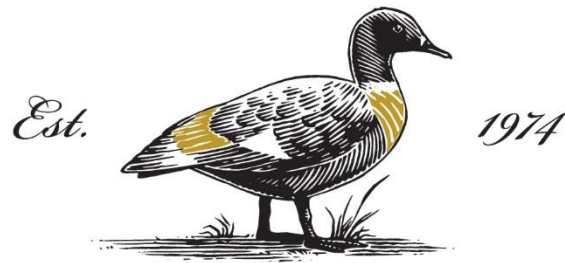
Any changes to the sailing programme will be advised via the e-newsletter on the Thursday before the Saturday racing.



EC.000264

BUNBURY WA ☎ 08 9725 6020

email: admin@batleyelectrics.com.au



CAPEL VALE

WESTERN AUSTRALIA

love wine, love Capel Vale

Family owned, Capel Vale has established mature vineyards, and produces wines that reflect the distinct climate and soils of the region.

Let our friendly staff guide you through our award winning wines from estate planted and grown vineyards in Margaret River, Geographe, Pemberton and Mount Barker.

Match Restaurant will take you on a journey with each Match plate specifically matched to our award winning wines. Each specially selected item will highlight a different character in the wine.

Match restaurant is open for lunchtime service Thursday to Monday.

Capel Vale Winery & Match Restaurant

Phone: (08) 9727 1986

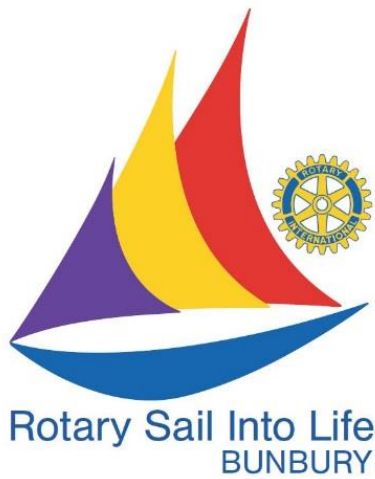
118 Mallokup Road, Capel W.A.

cellardoor@capelvale.com

www.capelvale.com

Top 5 star winery & Top 101 wineries in Australia – 2019 James Halliday Wine Companion.

Love Wine, Love Capel Vale



ROTARY SAIL INTO LIFE

ACCESSIBLE SAILING AND FISHING FOR EVERYONE

Accessible Sailing - Sail into Life is located at Koombana Bay Sailing Club. It provides an opportunity for people of all ages and abilities within our community to experience sailing in specially designed access sailing dinghies. We also have a floating pontoon and a hoist to assist people with mobility issues or who use wheelchairs to board the dinghies.

Our sessions are safe, supportive and volunteers help to ensure a great sailing experience.

It is open for people with any type of disability and their families.

Sail into Life is a Rotary project run in partnership with Enable Southwest and hosted by KBSC.

The program is currently the largest in the state and relies on local fundraising and corporate/government grants to operate.

Sailing days are Tuesday and Thursday mornings and every second Saturday. 9.30 am start.





Accessible Fishing - 'Rotary Reel Time' is the name of the accessible fishing pontoon boat that is available this season for people with disabilities and their families who may like to go fishing and/or touring around the waters of Koombana Bay.

We provide bait and equipment and our trained crew will assist people to give fishing a go.

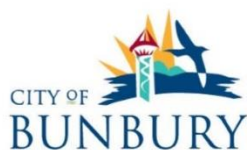
The sessions will run on Wednesday but may increase with demand. 10 am start.

If you would like to be involved in this very worthwhile program as a participant or as a volunteer, please contact Coordinator Tuesday to Thursday: sailintolife@gmail.com

THANK YOU TO OUR VALUED SPONSORS



Government of **Western Australia**
Department of **Regional Development**



SIMCOA
OPERATIONS



WEST COAST OUTRIGGER CANOE CLUB (WCOCC)

PRESIDENTS REPORT

A wise person once told me, a good presentation should be like a mini skirt.

- Short enough to keep you interested.
- But long enough to cover the good bits.

So here goes...Well to say it's been a quick 12 months would be an understatement, it feels the years are accelerating as the go on.

I was looking back over the last few nights to try and put into words a wrap up of where WCOCC has been and what we have achieved, not achieved however with good intention, differences we have made, yada, yada.

I'll be honest when I say, I think we are a club that is happy to fly under the radar a bit, we don't need to be up in flashing lights like some others, they can have that.

We are content in our demographic and that is fine, but more on that later.

As I did last year, some dot points of significance over the last 12 months:

- October 2018 – Matt demonstrates how to make a two-piece OC2 on an adventurous Friday afternoon training session.
- October 2018 – Perth Classic (Bridge to Bridge) – WCOCC Second line honours, first place mixed OC6.
- October 2018 – Bunnings sausage sizzle we netted around \$1800.00 for the club.
- November full moon paddle – We enjoyed the company of 4 other clubs.
- November Have a Go at Paddling Day in conjunction with KBSC Discover Sailing Day.
- Jan 2019 – Mandurah Duel – 2nd place open men OC6.
- Feb 2019 – Monkeys 20K relay – 2nd place.
- Feb 2019 – Three WCOCC members compete in the Sydney Harbour Challenge (Annie, George & Sonia)
- Feb 2019 – WCOCC purchase our OC3.
- March 2019 – Busso Jetty OC6 regatta (1st open women, 5th open men, 4th and 7th mixed)
- April 2019 State Titles
 - Mixed OC2 – 1st place.
 - Women's OC1 – 1st place.
 - Men's OC1 – 3rd place.
 - Women's OC2 – 1st place.
 - Women's OC6 – 1st place.
 - Men's OC6 – 5th place.
 - Mixed OC6 – 1st place.
- May 2019 Winter Series race 1 – WCOCC successfully hosted this first race event of the series as a non-paddling club and we did it very well.



- June 2019 – Winter series race 2 – George and Annie take out 1st Place on the OC1.
- And finally, WCOCC now have two new coaching staff in Armelle and Luke who successfully completed their coaching course.

So that covers pretty much what happened over the last year. So now just going back to earlier:

Our membership numbers have not really moved, a couple have gone and a couple have come on board, toward the end of the summer season there seemed to be a bit of promise of some new faces which we hope will pop up again as the weather improves, bolstering our numbers further. I look forward to pushing the membership drive a bit more this year, not looking to become a super club, but a few more will make it a bit easier when thinking of competing in events and holding events.

Similarly with sponsorship, that has gone a bit quiet with some past sponsors dropping off the radar. I will work with the incoming committee to enhance our sponsorship drive, spread our wings and try and increase our portfolio of sponsors, as well as endeavour to maintain our current sponsors with the adoption of keeping them updated on our paddling throughout the season.

KBSC – once again WCOCC would like to acknowledge and thank our landlord so to speak for their continual support and making us feel welcome to their club. We worked with KBSC this year with their hardstand clean up and rearrangement of the layout so we could go ahead with our new rear fencing and gates. Although, there was a bit of argy-bargy on that with regards to our agreed space, but all's well that ends well and it is done.

I would like to thank the outgoing committee for all your efforts and support over the last year, it's comforting to know we have a good bunch and we all have each other's back. We enjoyed the opportunity to move around a bit with the venues for some meetings which was refreshing, not wanting to pressure people or turn it into competition I think KBSC as home base is still the optimal option. But thank you to those who invited us to their homes, it was a nice change.

So hopefully, and I'm sure I would be on the money when I say that WCOCC can look forward to being in great hands for the next 12 months with the incoming committee.

As Confucius once said – If you don't want to be up shi! creek, make sure you have a paddle.

Thank you

Dean Baker - WCOCC President



WEST COAST OUTRIGGER CANOE CLUB

2019-2020 COMMITTEE MEMBERS

EXECUTIVE

President	Dean Baker	deanbaker4@bigpond.com	0419 037 260
Vice President	Rade Ristic	raderr07@icloud.com	0418683576
Secretary	Gina Deacon	ginaldeacon@hotmail.com	0418 937890
Treasurer	George Williams	georgewills57@gmail.com	0498 879140
Registrar	TBA		

COMMITTEE

Ian Lamplough	Ian.Lamplough@midlandbrick.com.au	0418 910828
Annie Williams	canoedler59@hotmail.com	0403 251313
Graham Patterson	graham@pattersonenterprises.com.au	0427643333
Gaynor Tuck	Gaynor.Tuck@education.wa.edu.au	0400141015
Armelle Chaussat	armelle_17@hotmail.com	0429 846584



Training days are Monday and Wednesday afternoons for OC6 training sessions (6 person canoes) and Fridays being the OC1/OC2 training/handicap racing night.

APH

CONTRACTORS

**FOR ALL YOUR CONSTRUCTION
& CIVIL NEEDS**

EARTHWORKS

ROADWORKS

DRAINAGE & SEWERAGE

SUBDIVISION CONSTRUCTION

BULK HAULAGE

LOW LOADER HIRE

EQUIPMENT HIRE

ROCK BREAKING

9725 4755

Fax: 9725 4248

Lot 26 Wetherly Drive Picton

admin@aphcontractors.com.au

www.aphcontractors.com.au

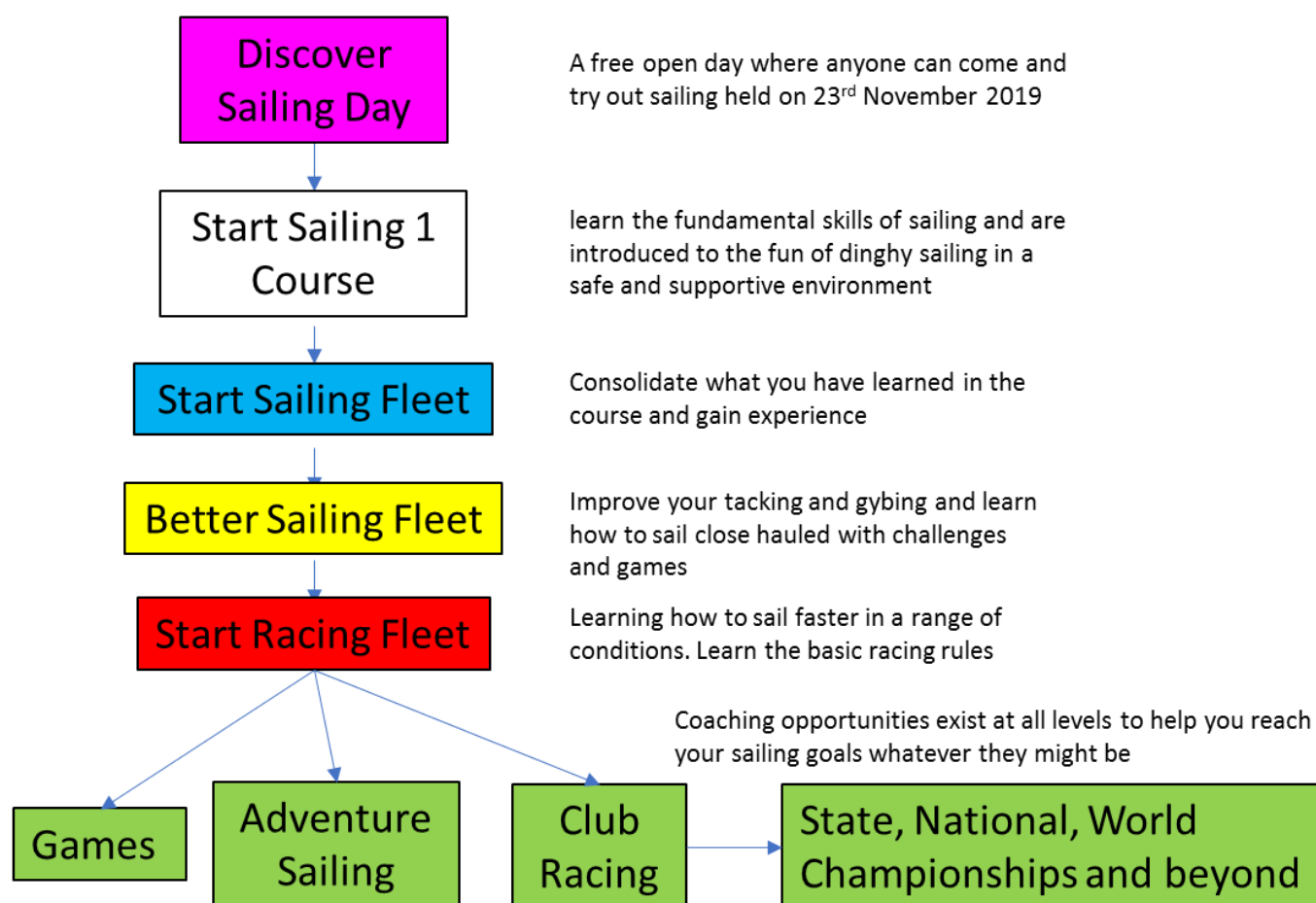
SAIL TRAINING

Sailing is a rewarding skill that can take a few weeks to learn and a lifetime to master.

KBSC offers pathways to get started in sailing in both dinghies and keelboats.



Dinghy Pathway



Start Sailing in Dinghies

Koombana Bay Sailing Club enables both adults and children to learn to sail dinghies by enrolling in the Start Sailing Course. This 12 hour course designed by Australian Sailing is provided by accredited instructors and builds confidence and a sense of adventure in a safe, supportive environment.

See our website www.koombanabay.com/sail-training and newsletter for course dates.

After completing the Start Sailing course, training continues with Saturday morning sessions. These run from 9:30 until 11:30 most Saturdays and are split into fleets according to experience.

When you are ready, you can join in with the Saturday afternoon racing, games and adventure sailing sessions.

KBSC encourages sailors to compete at higher levels. Advanced coaching options exist that can help you prepare for competition at state, national and world levels.



Start Sailing in Keelboats

Koombana Bay Sailing Club offer several pathways to get started in keelboat sailing.

Twilights

Many sailors get their first taste of sailing on Wednesday night twilight sails. All you have to do is arrive by 5pm and register in the Clubhouse to hitch a ride. A \$10 fee applies to non-members and social members.

This is a very popular event and places cannot be reserved or guaranteed.

Sail Training

Start Sailing Keelboat courses are a great way to learn keelboat sailing in a short amount of time.

The courses are run over 5 weeks by Australian Sailing accredited instructors and covers sailing theory, crewing, helming and safety.

All equipment and safety gear is provided.

See website

www.koombanabay.com/sail-training and newsletter for course dates.



Crewing

Our current skippers are always looking for crew to sail on Saturday afternoons, and jumping on board is a great way to learn. Experience isn't always necessary on the keelboats, and watching what happens will have you picking things up in no time.

To race on Saturdays you will need to join as a member, but we can offer you an opportunity to 'try before you buy', after this our crew membership is a great option. This covers all sailing fees for the season and gives you access to all Club facilities, and allows you to invite up to 5 guests down for a drink and meal.

There are many ways to become a crew member.

- Ask at the registration office on Saturday afternoons around noon.
- Stop by Wednesday or Friday nights and chat with other sailors at the bar.
- Register online www.koombanabay.com/memberships
- Download the SailConnect Mobile App to register your interest in Club events and interact with boat owners.
- A new crew board is now available near the outside ablution blocks, so if you are looking for crew or looking to sail please leave your details for others to see. The board will be cleared regularly so please keep watching and updating as required.



CLUB MERCHANDISE

Koombana Bay Sailing Club are partnered with Gill Marine to provide you with the highest quality sailing gear.

We also stock a casual range of t-shirts from local company Run Wild Design, Print and Surf.

Promote You Bunbury design and supply our other items and embroidery.

All stock is displayed at the Clubhouse, just ask the office or bar staff for the key to the cabinet.





CRUISING SAILS

Whether you are cruising around the world, the coast or enjoying a day on local waters, the design and quality of your sails makes a huge difference.

At Avalon Sail Co. our experienced sailmakers are happy to discuss your sail needs and offer expert advice on the best sail set-up for your boat. Ease of use and correct set up of sails makes for a more enjoyable time on the water, and the performance of the sail means you will get to your destination quicker.



RACE SAILS

Be at the front of the fleet with the latest sail design and quality construction, using the best available materials.

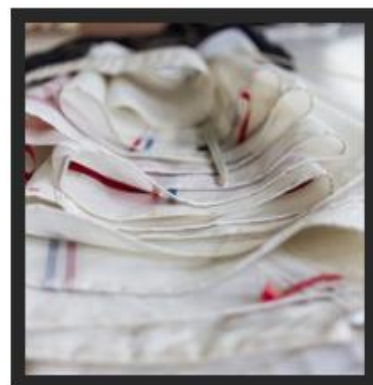
Attention to detail in design and finish as well as use of correct, quality materials is paramount in every sail that leaves the Avalon loft. Our sailmaking team live and breathe sailing and are out on the water every weekend and with over 40 years of sailmaking and design experience, you can be confident your sails will have the competitive edge.

Performance Race sails for all classes of yacht and dinghy, in the latest designs.



SERVICES

- * Sail repairs, battens, advice for all sails.
- * Pick up/ drop off service to local marinas.
- * Yacht sail covers, boom bags, boom tents, boat covers – all made to measure.
- * Seek our expert advice to ensure you get the best performance from your sail and boat, whether it be large or small.
- * Proudly Australian made, supporting local communities.



CONTACT PHIL 'BUGS' SMITH

AVALON SAIL CO, 44 PANTON ROAD, GREENFIELDS, WA, 6210, (08) 9581 9788

WWW.AVALONSAILS.COM.AU

KBSC CLUB CHAMPIONSHIP HEATS 2019/2020

Championship heats will be run for any class that can present three boats of one design for each heat. If there are classes interested in holding Club Championship heats, then please talk to the RC Sailing to have these included. Any modifications will have to be approved by both the RC Sailing, and the remainder of the boats competing in the class.

2019/2020 Club Championship Heat Dates:

November 9th

December 7th

December 21st

January 11th

March 14th

April 4th



As per the Sailing Instructions a Club Championship series shall be scored as below:

- a) When fewer than 5 races have been completed, a boats series score will be the total of her races scores.
- b) When 5 or more races have been completed, a boats series score will be the total of her races scores excluding her worst score.
- c) When 8 or more races have been completed, a boats series score will be the total of her race scores excluding her worst 2 scores.
- d) Championship points go to the boat in each heat.
- e) Skippers may apply to the race committee for dispensation from SI 17.2(d) in exception circumstances, ie: sale or damage to boat.

Note: Nacras will sail Championship Heats back to back (2 races) on each occasion, while the S80 fleet will have some single race days in addition to back to back sailing. The Division 2 fleet will sail the same courses/schedule as the S80 fleet. See the programme for specific dates.

Dates for Club Championship heats may be altered where conflicts with other significant class events exist. This must be applied for in writing by the class captain, with a majority of the class affected agreeing to the change. Requests must be at least seven (7) days ahead of the heat affected, to the Rear Commodore – Sailing.

2018/2019 AWARDS

Opening Day Commodores' Trophy - Sponsored by Judy Talbot & Malcolm Bryant

1st - Rum Runner - Ray Leguier and Greg Rowe

Pre - Christmas Consistency - Sponsored by TAYCOT

Division 1

1st - Flight II - Brian Allen

2nd - Easy Tiger - Neil Young & Geoff Williams

3rd - Xstarsea - Grenville Snelling

Division 2

1st - Escape - Darrin and Leonie Tinley

2nd - Miss Behavin - Phil Slee

3rd - Rum Runner - Ray Leguier and Greg Rowe

JaM

1st - Swedish Kyss - Warwick Litchfield

2nd - String Theory - Denham McMullen

3rd - Arkeeta - Warren Cowell

Cats

1st - Will 2 Thrill - Cameron Waters and John Fulton

2nd - Goose Marine - Gary Gornall

Mixed Dinghies

1st - She's a Worry - Emily Walker

2nd - Queen of Hearts - Noelene Snelling

Post - Christmas Consistency - Sponsored by Birch Design

Division 1

1st - Flight 11 - Brian Allen

2nd - Easy Tiger - Neil Young & Geoff Williams

3rd - Crews Control - Jon Birch

Division 2

1st - Escape - Darrin and Leonie Tinley

2nd - Tsunami - Bernie Morris

3rd - Rum Runner - Ray Leguier and Greg Rowe



JaM

- 1st - Arkeeta - Warren Cowell
2nd - Swedish Kyss - Warwick Litchfield
3rd - Triffic - Ken Mills

Cats

- 1st - Will 2 Thrill - Cameron Waters and John Fulton
2nd - Bent - Anthony Talbot

Mixed Dinghies

- 1st - Black Betty - Richard Howell
2nd - Queen of Hearts - Noelene Snelling



Extended Bay Series - Division 1

- 1st - Crews Control – Jon Birch
2nd - Courtesan - Phil Truman
3rd - Thirsty Work - David Clifton

Extended Bay Series - Division 2

- 1st - Tsunami - Bernie Morris
2nd - Empty Pockets - Gil Sowden
3rd - Rum Runner - Ray Leguier and Greg Rowe

Dick Anderson Cruiser Consistency Trophy

Division 1 - Flight 11 - Brian Allen

Division 2 - Tsunami - Bernie Morris

S80 - Club Championship

- 1st - Miss Behavin - Phil Slee
2nd - Rum Runner - Ray Leguier and Greg Rowe
3rd - Escape - Darrin and Leonie Tinley



Catamarans - Club Championship

- 1st - Goose Marine - Gary Gornall
2nd - Will 2 Thrill - Cameron Waters and John Fulton





Twilight Trophy

1st - Still Dreaming - Peter Swanson

2nd - Crews Control – Jon Birch

3rd - Courtesan – Phil Truman

Birch Design Friday Twilight Series

1st - Arkeeta - Warren Cowell

2nd - Tsunami - Bernie Morris

3rd - En Garde - Rishi Oregioni



Enticer Series

1st - Escape - Darrin and Leonie Tinley

F18 National Champion

Goose Marine – Gary Gornall and Scott Golder

S80 State Champion AND S80 SW Championships Winner

Miss Behavin – Phil Slee, Keith Bryce, Michael Peel, Steve Walkley & Cleve Armstrong

Naturaliste Yachts and Chandlery Stayers' Series

1st - Asylum - Ian Anderson

2nd - Xstarsea - Grenville Snelling

3rd - Intruder - George Marden

Bill and George Chambers Trophy for Best Overall Junior

Kathleen Ryan

Harry and Joan Irwin Award for Best Club Person

Ray Leguier

Crewman of the Year Award

Jeremy Hedley (Crews Control)

John Parker Memorial Trophy

James Ison

Tim Lee Steere Encouragement Award

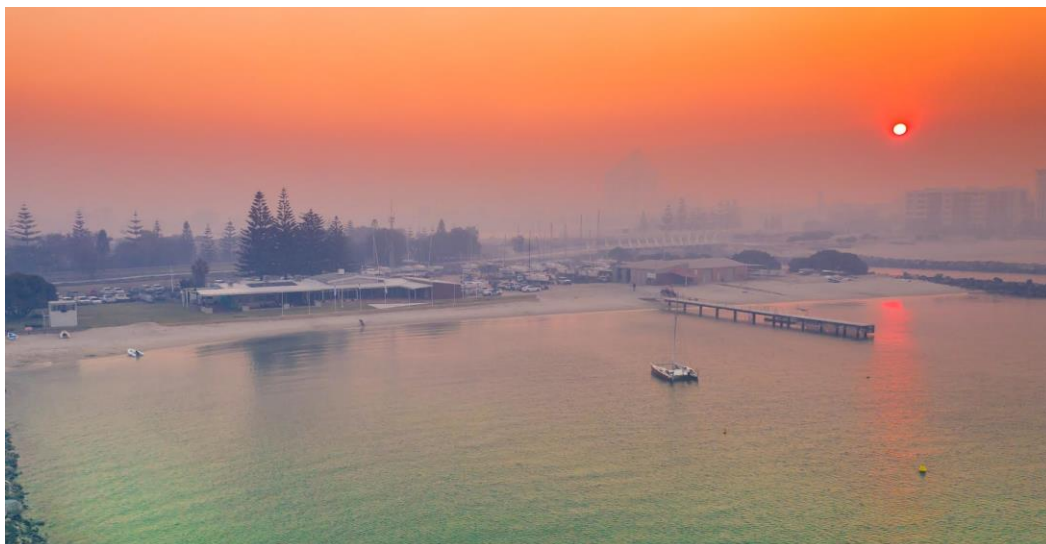
Ellis Gaulton



OFFICER OF THE DAY ROSTER

Date	Officer of the Day	Event
Sat 19/10	Stuart Thompson	Consistency
Sat 26/10	Darrin Tinley	Opening Day
Sat 2/11	Phil Slee	Consistency/Moth Mayhem
Sun 3/11	Darrin Tinley	Moth Mayhem
Sat 9/11	Dave Doherty	Consistency/Championship
Sat 16/11	Ian Anderson	Extended/Inner Bay
Sat 23/11	Stuart Thompson	Discover Sailing/Consistency
Sat 30/11	David Pilbeam	Extended/Inner Bay/Consistency/Travellers Series
Sat 7/12	Dave Doherty	Consistency/Championship
Sat 14/12	Sarah Twigger	Enticer Series/Handicap Start /Consistency
Sat 21/12	Greg Jones	Consistency/Championship
Fri 3/1	Jon Birch	Birch Design Series
Sat 4/1	Sheree French	Consistency
Fri 10/1	Jon Birch	Birch Design Series
Sat 11/1	Russel Batley	Consistency/Championship
Fri 17/1	Jon Birch	Birch Design Series
Sat 18/1	TBC	Dunsborough Dash
Sat 25/1	Phil Slee	SW Champs
Sun 26/1	Darrin Tinley	SW Champs
Sat 1/2	David Pilbeam	Enticer Skippers/Consistency
Sat 8/2	Sarah Twigger	Extended/Inner Bay
Sat 15/2	Sheree French	Consistency/Race Week
Sat 22/2	Russel Batley	Consistency/Race Week
Sat 7/3	Ian Anderson	Extended/Inner Bay
Sat 14/3	Greg Jones	Consistency/Championship
Sat 21/3	Darrin Tinley	Enticer Skippers/Consistency
Sat 28/3	Phil Slee	Handicap Start/Consistency
Sat 4/4	Stuart Thompson	Consistency/Championship
Sun 19/4	David Doherty	Naturaliste Series
Sun 26/4	David Doherty	Naturaliste Series
Sun 3/5	David Doherty	Naturaliste Series

Officer of the Day roster is subject to last minute changes due to availability of committee members.



OCTOBER 2019

Saturday 19 th	2.00pm - Consistency Racing (All Classes)
Wednesday 23 rd	5.00pm - Sails-Bar & Galley Open 5.30pm - First Twilight Sail - Thank you to Henty View Vineyard for sponsoring our Twilight sailing season.
Friday 25 th	5.00pm - Sails-Bar & Galley Open
Saturday 26 th	<u>Opening Day - Ceremony from 12.00pm</u> Commodores Cup Race - Sponsored by Judy Talbot and Malcolm Bryant
Wednesday 30 th	5.30pm - Twilight Sailing

KOOMBANA BAY SAILING CLUB

FREE OPEN DAY

Please join Koombana Bay Sailing Club, Rotary Sail Into Life and the West Coast Outrigger Canoe Club for a FREE day of fun. Come and experience what our club has to offer.



NOVEMBER 2019

Saturday 2 nd	<u>Moth Racing Spectacular</u> 2.00pm - Consistency Racing (All Classes)
Sunday 3 rd	<u>Moth Racing Spectacular</u>
Wednesday 6 th	5.45pm - Twilight Sailing
Friday 8 th	5.00pm - Sails-Bar & Galley Open
Saturday 9 th	2.00pm – Consistency Racing (All Classes) 2.00pm - Championship Heats #1 & #2 (S80s & Nacra)
Wednesday 13 th	6.00pm - Twilight Sailing
Friday 15 th	5.00pm - Sails-Bar & Galley Open
Saturday 16 th	12.00pm - Extended Bay Race #1 (Eligible Cat 5 boats) 2.00pm - Bay Racing Series #1 (Other keel boats) 2.00pm - Consistency Racing (Cats, OTB)
Wednesday 20 th	6.00pm - Twilight Sailing
Friday 22 nd	5.00pm - Sails-Bar & Galley Open
Saturday 23 rd	KBSC OPEN DAY - Discover Sailing 2.00pm - Consistency Racing (All Classes) – <i>Please note there may be a postponement if required to accommodate Discover Sailing.</i>
Wednesday 27 th	6.00pm - Twilight Sailing
Friday 29 th	5.00pm - Sails-Bar & Galley Open
Saturday 30 th	1.00pm - <u>Traveller Series</u> Heat #1 at KBSC 12.00pm - Extended Bay Race #2 (Eligible Cat 5 boats) 2.00pm - Bay Racing Series #2 (Other keel boats) 2.00pm - Consistency Racing (Cats, OTB)

DECEMBER 2019

Wednesday 4 th	6.00pm - Twilight Sailing
Friday 6 th	5.00pm - Sails-Bar & Galley Open
Saturday 7 th	2.00pm - Consistency Racing (All Classes) 2.00pm - Championship Heat #3 (S80) 2.00pm - Championship Heat #3 & #4 (Nacra)
Wednesday 11 th	6.00pm - Twilight Sailing
Friday 13 th	5.00pm - Sails-Bar & Galley Open
Saturday 14 th	12.00pm - <u>Enticer Series Race #1</u> (All Classes) Female or Junior Skipper 2.00pm - <u>Handicap Start</u> Consistency Racing (All Classes)
Wednesday 18 th	6.00pm - Twilight Sailing
Friday 20 th	5.00pm - Sails-Bar & Galley Open
Saturday 21 st	2.00pm - Consistency Racing (All Classes) 2.00pm - Championship Heat #4 & #5 (S80s) 2.00pm - Championship Heat #5 & #6 (Nacra)
Wednesday 25 th	Christmas New Year Break - Clubhouse Closed
Saturday 28 th	Christmas New Year Break - Clubhouse Closed
Tuesday 31 st	New Year's Eve - Under the Sea - Masquerade Party



Book Online www.breckenhealth.com.au



Brecken

Health Care

Bunbury (08) 9791 8133

Eaton (08) 9724 1533

Busselton (08) 9751 5222

Leschenault (08) 9725 8471



Discovery

PARKS

Welcome to Koombana Bay
& Bunbury Village



Tent Sites



Van Sites



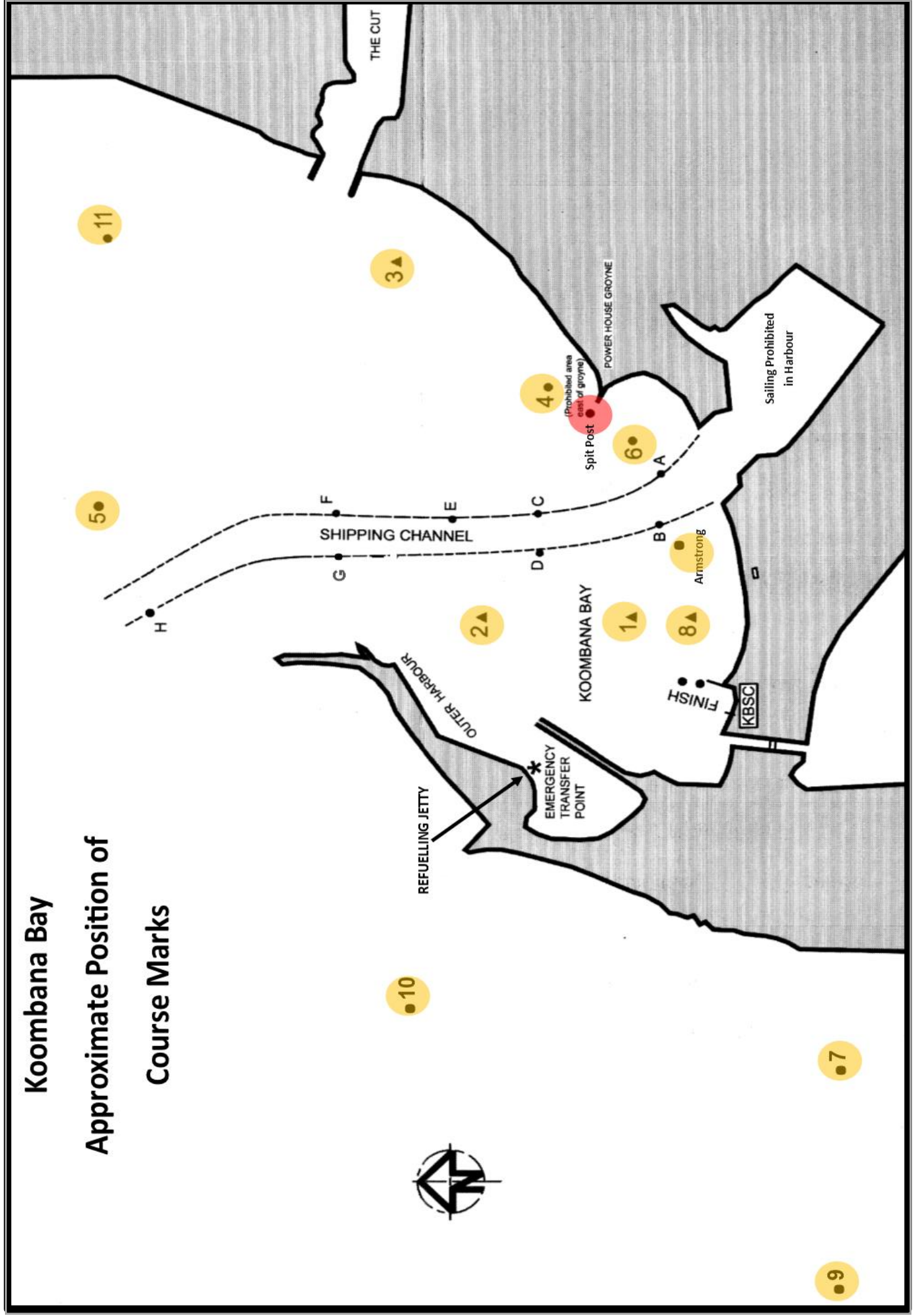
Cabins

discoveryholidayparks.com.au

Koombana Bay

Approximate Position of

Course Marks





Open Friday & Wednesday nights.

Providing a stunning location, quality meals and drinks,
Sails - Bar & Galley is the perfect place to come and relax.

Swipe your members card to receive 20% off all beverages
and to use your House Support Credit

PLUS earn points with all bar purchases, 1000 points = \$50

Just ask the bar staff to check how many points you have.



Social memberships available.

JANUARY 2020

Wednesday 1 st	Christmas New Year Break - Clubhouse Closed
Friday 3 rd	<u>Birch Design Friday Twilight #1</u> 5.00pm - Sails-Bar & Galley Open
Saturday 4 th	2.00pm - Consistency Racing (All Classes)
Wednesday 8 th	6.00pm - Twilight Sailing
Friday 10 th	<u>Birch Design Friday Twilight #2</u> 5.00pm - Sails-Bar & Galley Open
Saturday 11 th	2.00pm - Consistency Racing (All Classes) 2.00pm - Championship Heat #6 (S80) 2.00pm - Championship Heat #7 & #8 (Nacra)
Wednesday 15 th	6.00pm - Twilight Sailing
Friday 17 th	<u>Birch Design Friday Twilight #3</u> 5.00pm - Sails-Bar & Galley Open
Saturday 18 th	<u>Dunsborough Dash</u> (All Keel Boat Fleets) No keel boat racing at KBSC. 2.00 - Consistency Racing (Cats & OTB)
Wednesday 22 nd	6.00pm - Twilight Sailing
Friday 24 th	5.00pm - Sails-Bar & Galley Open
Saturday 25 th	<u>South West Championships</u> (S80 & S97 Fleets)
Sunday 26 th	South West Championships Continue
Wednesday 29 th	6.00pm - Twilight Sailing

The top half of the image features a stylized Australian flag. The upper left corner shows the Union Jack in red and white. The rest of the field is dark blue with several white seven-pointed stars of varying sizes. The text 'KOOMBANA BAY SAILING CLUB' is written in white, bold, sans-serif capital letters across the middle of this section.

KOOMBANA BAY SAILING CLUB

Australia Day Long Weekend 2020

The bottom half of the image shows a group of sailboats racing on a blue body of water under a clear sky. The boats have various colored sails, including purple, red, and white. The text 'S80 & S97 SOUTH WEST CHAMPIONSHIPS' is overlaid in large, bold, red, sans-serif capital letters.

S80 & S97 SOUTH WEST CHAMPIONSHIPS

FEBRUARY 2020

Saturday 1 st	12.00pm - <u>Enticer Series Race #2</u> (All Classes) Female or Junior Skipper 2.00pm - Consistency Racing (All Classes)
Wednesday 5 th	6.00pm - Twilight Sailing
Friday 7 th	5.00pm - Sails-Bar & Galley Open
Saturday 8 th	12.00pm - Extended Bay Race #3 (Eligible Cat 5 boats) 2.00pm - Bay Racing Series #3 (Other keel boats) 2.00pm - Consistency Racing (Cats, OTB)
Sunday 9 th	1.00pm - <u>Traveller Series</u> Heat #2 @ SBYC
Wednesday 12 th	6.00pm - Twilight Sailing
Friday 14 th	5.00pm - Sails-Bar & Galley Open
Saturday 15 th to Friday 21 st	<u>Geographe Bay Race Week 2019</u> See newsletter for details about feeder events etc. 2.00pm - Consistency Racing (All Classes)
Wednesday 19 th	6.00pm - Twilight Sailing
Friday 21 st	5.00pm - Sails-Bar & Galley Open
Saturday 22 nd	2.00pm - Consistency Racing (All Classes)
Wednesday 26 th	6.00pm - Twilight Sailing
Friday 28 th	5.00pm - Sails-Bar & Galley Open
Saturday 29 th	Labour Day Long Weekend - Cruising Weekender – no Club racing - S80 State Championships RPYC Annex

MARCH 2020

Wednesday 4 th	6.00pm - Twilight Sailing
Friday 6 th	5.00pm - Sails-Bar & Galley Open
Saturday 7 th	12.00pm - Extended Bay Race #4 (Eligible Cat 5 boats) 2.00pm - Bay Racing Series #4 (Other keel boats) 2.00pm - Consistency Racing (Cats, OTB)
Wednesday 11 th	5.45pm - Twilight Sailing
Friday 13 th	5.00pm - Sails-Bar & Galley Open
Saturday 14 th	2.00pm - Consistency Racing (All Classes) 2.00pm - Championship Heat #7 (S80) 2.00pm - Championship Heat #9 & #10 (Nacra)
Wednesday 18 th	6.00pm - Twilight Sailing
Friday 20 th	5.00pm - Sails-Bar & Galley Open
Saturday 21 st	12.00pm - <u>Enticer Series Race #3</u> (All Classes) Female or Junior Skipper 2.00pm - Consistency Racing (All Classes)
Wednesday 25 th	5.45pm - Twilight Sail
Friday 27 th	5.00pm - Sails-Bar & Galley Open
Saturday 28 th	<u>Mudlark State Championships</u> 2.00pm - <u>HANDICAP START</u> - Consistency Racing (All Classes)
Sunday 29 th	Mudlark Regatta Continues

APRIL 2020

Wednesday 1 st	5.30pm - Final Twilight Sail - Water Fight (no balloons)
Friday 3 rd	5.00pm - Sails-Bar & Galley Open
Saturday 4 th	2.00pm - Consistency Racing (All Classes) 2.00pm - Championship Heat #8 & #9 (S80) 2.00pm - Championship Heat #11 & #12 (Nacra)
Friday 10 th	Easter Long Weekend - Clubhouse closed
Saturday 18 th	1.00pm - <u>Traveler Series</u> Heat #3 @ MOFSC
Sunday 19 th (race times subject to wind conditions on the day)	10.00am - Naturaliste Stayer Series Racing 12.00pm - Lunch 1.30pm - Naturaliste Stayer Series Racing
Sunday 26 th (race times subject to wind conditions on the day)	10.00am - Naturaliste Stayer Series Racing 12.00pm - Lunch 1.30pm - Naturaliste Stayer Series Racing
Sunday 3 rd May (race times subject to wind conditions on the day)	10.00am - Naturaliste Stayer Series Racing 12.00pm - Lunch 1.30pm - Naturaliste Stayer Series Racing

CHRIS ROWE & CO

Naturaliste

Yachts And Chandlery

10%
Discount
for all KBSC
members

Agent for Ronstan, Lanex Ropes, Harken and Hempel

Small but comprehensive range available off shelf

Small Fabrication Work – Aluminium & Stainless Steel

Fast, effective ordering to suit your needs



HEMPEL

HARKEN®

At Koombana Bay Sailing Club - Anchorage Cove Bunbury WA

Contact David - 0418 933 517 - www.naturalisteYC.com



OTHER DATES

Saturday 30th May

End of Season Party (Presentation Night)

Tuesday 18th August

Annual General Meeting

Priority MANAGEMENT



Stuart Thompson

- Project Management
- Town Planning



0408 932 079



stuart@prioritymanagement.net.au

STARTING PROCEDURES AND RULES

If you're new to sailing, or just never really learned the starting procedure, we've taken the time to outline the basics here. Please take the time to read the information below, it will make everyone's life easier.

CLUB STARTING PROCEDURE:

Each of these 4 stages is accompanied by a single audible signal from the start boat.

5 min warning - YOUR class flag is raised

4 min warning - Blue Peter (Code P flag) is raised

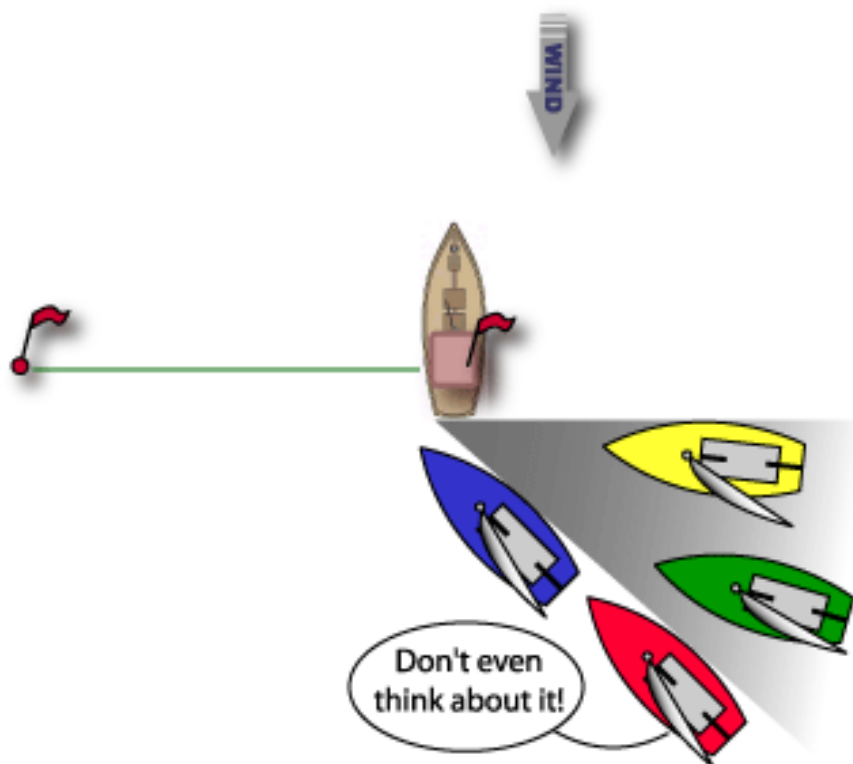
1min warning - Blue Peter (Code P flag) is dropped

START / GO YOUR class flag is lowered

IF YOU ARE NOT STARTING, PLEASE STAY OFF THE LINE.

NO BARGING IN ON THE START LINE:

IF YOU ARE IN THE GREY AREA, YOU CAN'T BARGE IN.



For **all** rules please see the 2017-2020 Racing Rules of Sailing at www.sailingresources.org.au/class-assoc/rrs-special-regs

EXTENDED BAY RACING 2019/2020 - General Information

Keel Boats with Category 5 Safety Certificate

In 2019/2020 an Extended Bay Series will be run as a separate standalone series (not affecting overall season consistency or the Dick Anderson Trophy).

Nominated Keel Boats are required to have a valid Category 5 Safety Certificate as certified by the Club Safety Officer.

Competing yachts will be combined for the Extended Bay series with prizes being awarded as per the Sailing Instructions (SI 27.1) included in this programme. This is a handicap event.

The start time will be 1200hrs on the dates scheduled in the sailing programme.
Nominations will close at 1100hrs.

Courses will be determined on the day with consideration given to the forecast conditions. Competing craft are required to sign on and will be provided with the course at that time.

INNER BAY RACING 2019/2020 – General Information

For those keel boats choosing not to compete in the Extended Bay Series, a parallel standalone series will be conducted within the Bay (not affecting overall season consistency or the Dick Anderson Trophy).

Competing yachts will be combined for the Inner Bay Series with prizes being awarded as per the Sailing Instructions (SI 27.1) included in this programme. This is a handicap event.

The start time will be 1400hrs. Nominations will close 10 minutes prior to the starting signal.

Competing yachts will be required to nominate their sail configuration before the first race (JaM, spinnaker etc) and are required to retain that configuration for the duration of the series. This is to enable consistent handicapping.

Courses will be determined on the day with consideration given to the forecast conditions. Competing craft are required to sign on and will be provided with the course at that time.

Shipping and Tug Boat Movements

The safety of our members is paramount and a good working relationship with the Bunbury Port Authority is crucial as we share the waterway.

For the purpose of this notice, a 'shipping movement' is classed as any vessel in excess of 49m with a pilot on board, and published in the Port's daily schedule:

<http://www.byport.com.au/index.htm>

The 'shipping channel' is defined as per the diagram. The northern entry to the channel is at No.3 pylon.

Requirements of KBSC Members

Never pass in front of a ship which has entered the shipping channel, whether racing or sailing socially. Always leave the shipping channel immediately if a ship's horn blows (regardless of whether you believe it to be in the channel or not). Do not continue sailing to your next mark unless that is indeed the quickest route to exit the channel.

Always leave a minimum *one* ship's length if passing through the shipping channel behind a ship.

Always follow instructions however communicated from a race management boat, pilot boat, a tug or any other Port Authority personnel.

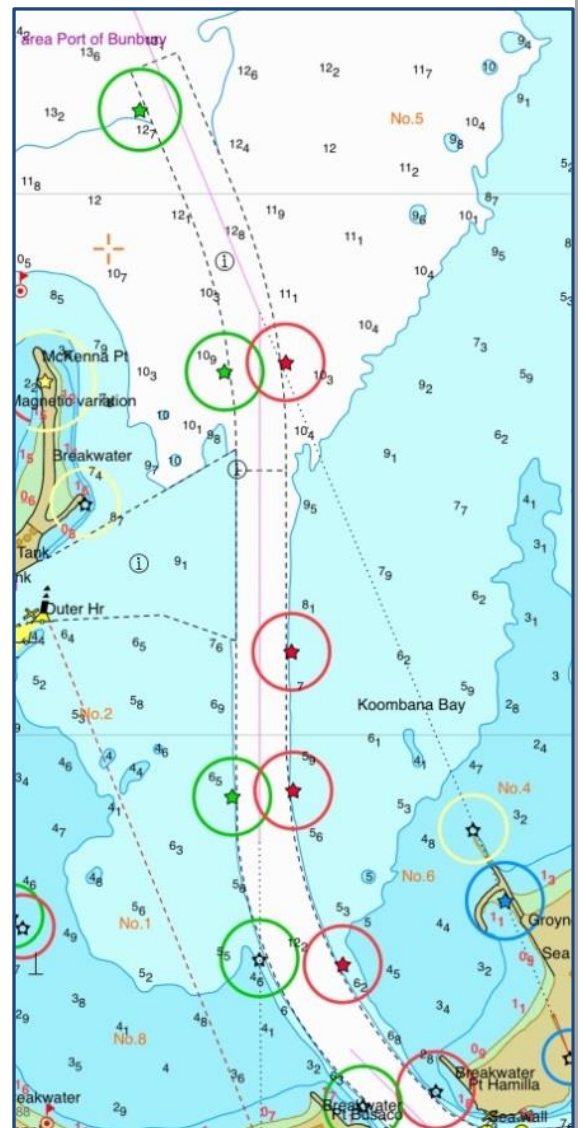
Always report incidents to the Rear Commodore Sailing or Officer of the Day as soon as is practical.

Breach of the Requirements

Situations where members do not appear to have complied with these requirements will be referred to the Protest / Rules Committee and the competing yacht may be disqualified. Reports of possible breaches can be made by Race Management, competing yachts through a protest or the Bunbury Port Authority.

Contacts: Bunbury Port Authority

- The base station is "Port of BUNBURY", call sign - VH6HZJ.
- Station monitors VHF Channel - 16 (156.8 Mhz).
- Phone: General Enquiries - 9729 6500 Duty Pilot - 9729 6527



Tug Boat Movements during Racing/Social Sailing

Port Operations require that tug boats move to and from shipping movements. Tugs need to use the deep water channel to access the Inner Harbour and have rights within the channel. It can also be difficult for tug boat Masters to anticipate the movement and course changes of numerous yachts.

In order to minimise the impact of tug boat movements on sailing activities, agreement has been reached with the Port Authority and tug boat operator's that tugs moving to and from shipping movements will proceed along the channel on a consistent course and at a reduced speed of 5 knots.

It is incumbent upon yachts to stay out of the way of tug boat movements in the channel.



IMPORTANT SAFETY NOTE

EMERGENCY SERVICES PICK UP/TRANSFER POINT

Should a member of your crew require emergency medical assistance, please call 000 with the condition or symptoms and advise them to meet your craft at the Service/Refuelling Jetty in Casuarina Harbour (Outer Harbour). Advise the Operator that both road and helicopter access is available at 33 18.647 SOUTH / 115 38.428 EAST. Also notify the club of any emergency on VHF 72. Bunbury Sea Rescue is also available on VHF 16 for emergencies only. All competing boats should have a listening watch on VHF 72.

Sailing Instructions

1. **Rules:** KBSC Club races will be governed by the current racing rules of sailing (Blue Book), its prescriptions and the KBSC sailing instructions.
2. **Notices to Competitors:** Notices to competitors will be posted on the KBSC official notice board located outside the Race Control Office.
3. **Changes to sailing instructions:** Any Change to sailing instructions will be posted on the official notice board two hours before the commencement of the days racing, except that any change to the schedule of races will be posted by 1800 on the day before it will take effect.
4. **Signals made ashore:** Signals made ashore will be displayed from the flagpole in front of the KBSC office. When flag AP is displayed ashore, 1 minute is replaced with 'not less than 30 minutes' in the race signal AP.
5. **Schedule of races:** The current year KBSC season programme forms part of these sailing instructions.
6. **Class Flags:** Class signals as described on KBSC club course sheets.
7. **Racing area:** As described in the current year KBSC Season Programme.
8. **The Courses:** Club course sheets form part of these sailing instructions and are available from the Race Control Office.
9. **Marks:** 1-12 plus Armstrong – PVC PIPE with yellow/orange flags. Coordinates specified in programme.
10. **Prohibited sailing:**
 - 10.1 Passing through a start line after having started correctly.
 - 10.2 Passing through a finish line after your class warning signal, except to finish.
 - 10.3 Passing between the power house spit post and the power house groin. See course map in this booklet for relative location.
 - 10.4 Commercial shipping. Boats MUST NOT enter the shipping channel ahead of a ship (>49m long) once the ship has entered the channel and must not cross within one ship length astern of a ship. Ships entering the channel may or may not sound one long blast on the ships horn to indicate to boats that the ship is entering the channel.
 - 10.5 Any yacht already in the channel when a ship enters the channel must immediately leave the channel by the fastest possible route to the side. See also 'Shipping and Tug Boat Movements'.
11. **Nominations:** All yachts must nominate for each race, or set of back-to-back races by completing the nomination form and by paying the required fee.
 - 11.1 Nominations close 10 minutes prior to your class warning signal, except for Extended Bay Races which closes at 1100hrs on the day of racing.
 - 11.2 Any yachts that fail to nominate according to this instruction will be deemed to be a non-starter and scored accordingly.
 - 11.3 The nomination fee for seniors is \$5 per boat and \$2 for juniors per boat.
12. **The Start:**
 - 12.1 Races shall be started by using RRS rule 26.
 - 12.2 The starting line will be between a staff displaying an orange flag on the race committee signal boat at the starboard end and a buoy flying an orange flag at the port end.
 - 12.3 A distance mark may be permanently streamed from the race committee signal boat from the time of the warning signal until all boats have started. The buoy is deemed to be a permanent part of the committee boat and any boat touching or passing between it and the committee boat shall be deemed to have touched the committee boat.
 - 12.4 Boats whose warning signal has not been made shall avoid the starting area during the starting sequence for other races.
 - 12.5 A boat starting later than 4 minutes after her starting signal shall be scored 'did not start' without a hearing. This changes rule A4.
13. **Shortening Course.** If the race committee signals a shortened course (displays flag "S" with two sound signals together with the 'Class' flag of the boats affected), near the mark of the course. All boats affected will complete the course up to this mark, pass on the correct side of it and then sail to mark 8 (passing it to starboard) and then to the finish line, in an east to west direction.

14. The finish.

- 14.1 Unless otherwise specified, the finish line for all yachts shall be an imaginary line between the KBSC Race control tower and the outer of the two finish marker buoys (yellow cross marker).
- 14.2 All boats must pass between the inner finish marker buoy and the outer club mooring marker (yellow cross marker) to have finished correctly.

15. Penalty System. For all classes of boats >3.65m long, rule 44.1 is changed so that Two Turns Penalty is replaced by the One Turn Penalty.

16. Time Limit: The time limit for finishing races on courses around club marks is three and a half hours from your class start. Boats failing to finish within this time will be scored "Did Not Finish" without a hearing. This changes rule 35, A4 and A5.

17. Arbitration

- 17.1 An arbitration hearing will be conducted for all protests lodged in accordance with rule 61 which allege an infringement of a rule of part 2, Part 4 or rule 31. Such hearings will be held subsequent to the protest being lodged and prior to the protest hearing.
- 17.2 Rule 41 is changed to permit a boat that has broken a rule of Part 2, Part4 or rule 31 to take a penalty after racing but prior to any protest hearing. Her penalty shall be scoring penalty equal to a finishing place midway between the boats finishing place and the score for a disqualification. Half points shall be disregarded and the points for other boats shall not be adjusted.

The following will apply.

- a) Arbitration hearings will be held after the protest has been lodged and before the protest hearing.
- b) The time limit and place of the arbitration hearing will be decided by the arbitrator, and such advice shall be given verbally.
- c) One representative from each boat shall attend the hearing, and no witnesses shall be allowed.
- d) After lodging the protest/request and being given two copies, it will be the responsibility of the protester to locate and bring the protestee to the arbitration hearing.
- e) The arbitrator shall decide the manner in which testimony is given.
- f) The arbitrator may be a member of a protest committee and may give evidence at any subsequent protest hearing.

After taking testimony the arbitrator shall make one of the following conclusions:

- a) The protest does not comply with Rule 61 and the protester may withdraw the protest.
 - b) The matter shall proceed to a protest hearing (this may be for any reason decided by the arbitrator including the evidence being too complex or divergent to reach a reasonable and timely conclusion).
 - c) There has been no rule broken and the protester may withdraw the protest.
 - d) A rule was broken by one or more of the boats involved, in which case, the infringing boat may accept a penalty being scoring points equal to a finishing place mid-way between her actual finishing place and a disqualification, and if so accepted, the protester shall withdraw the protest.
- 17.3 If the arbitrator decides that a breach of a class rule has had no significant effect on the outcome of the race it may
- a) Impose a scoring penalty less than disqualification; or
 - b) Make another arrangement it decides is equitable, this changes rule 64.1.

18. Protest and request for redress:

- 18.1 Protest forms are available from the race office. Protest and request for redress or reopening shall be delivered within the appropriate time limit. The protest committee may extend the time limit on its discretion.
- 18.2 The protest time limit is 1 hour after the last boat has finished the last race of the day.
- 18.3 Notices will be posted no later than 30 minutes after the protest time limit to inform competitors of hearings in which they are parties.

- 18.4 Notice of protests by the race committee or protest committee will be posted to inform boats under rule 61.1(b).
- 18.5 Breaches of instruction 10, 12.4, 25 and 26.4 will not be grounds for protest by a boat. This changes rule 60.1(a). Penalties for these breaches may be less than disqualification if the protest committee so decides. The scoring for a discretionary penalty imposed under this instruction will be DPI.
- 19. Scoring:** The low point system of Appendix A will apply. Rule A9 will apply for scoring boats that are non-finishers, disqualifications and non-starters in a race.
- 20. Championship Competition:** A club championship series shall be scored as below.
- When fewer than 5 races have been completed, a boats series score will be the total of her races scores.
 - When 5 or more races have been completed, a boats series score will be the total of her races scores excluding her worst score.
 - When 8 or more races have been completed, a boats series score will be the total of her race scores excluding her worst 2 scores.
 - Championship points go to the boat in each heat.
 - Skippers may apply to the race committee for dispensation from SI 17.2(d) in exception circumstances, ie: sale or damage to boat.
- 21. Consistency Competition on Handicap Results:**
- There are 2 consistency series for each class as per the current year KBSC season programme. A pre-Christmas and post-Christmas consistency series. For the division 1 & 2 fleets there will also be an overall consistency trophy which will combine the Pre-Christmas and Post-Christmas series.
 - When 5 or more heats have been completed, a boats series score will be the total of her race scores excluding her worst score.
 - When 8 or more heats have been completed, a boats series score will be the total of her race scores excluding her worst 2 scores.
 - Consistency points in all classes go to the boat.
- 22. Handicaps:** A Place penalty system will be used. Refer to general information section in the current year KBSC season programme.
- 23. Resail:** Any yacht may enter a resail of its class race, but points will be awarded only to boats nominated in the original race. Current handicaps at the time of the re-sail will apply. Resail dates will be posted on the official notice board.
- 24. Safety Regulations:**
- All yachts shall conform PRIOR TO ITS FIRST NOMINATION to the nominated Safety category under the RRS Special Regulations 2017-2020 and any amendments set by the Club.
 - Personal buoyancy; all crew on Off the Beach, Division 3, JaM, or any other cruiser with non-compliant safety rails and lines are required to wear an approved PFD at all times while on the water.
 - Any boat competing in a KBSC event, social or otherwise, shall comply with the relevant Department of Transport Regulations.
 - Cruisers sailing in extended races must comply to the nominated safety category with additions as published by the club.
 - Off the beach boats must conform to the 2017-2021 Australian Sailing Special Regulations.
 - Boats on club courses which pass a line from No 11 to No 9 to Hastie Street Mark must comply with Category 5 with additions as published by the club.
 - Boats on club courses that sail in Koombana Bay bounded by the end of McKenna Point to a point approximately 200 metres North of Beacon F to the South groyne of the Cut Entrance must comply with Category 6. This includes Twilight, Cruising, JaM and special events.
 - A yacht that retires from a race or decides not to start after having nominated shall notify the Race control tower within 30 minutes of returning to the beach or mooring. Cruisers may notify by radio.

25. Entry Requirements:

- 25.1. Only yachts registered with the club are eligible for consistency and championship points.
- 25.2. Non-members new to the club may sail in three club races only, after this they are deemed to be non-financial.
- 25.3. Non-financial members may not sail in any club races unless they have paid the nominated daily fee for that race.
- 25.4. The race committee may refuse nominations from boats with non-financial crews or skippers. Boats that race with non-financial members will not be eligible for consistency and champion points.
- 25.5. Boats sailing in club races must display on the mainsail a club or class registered number.
- 25.6. Boats competing in approved races and flag officers who miss races because of club commitments may apply to the sailing committee in writing, prior to the event to have average points awarded for the missed races. The application must include the nomination fee for the missed race. Average points will be based on the number of starters in the series.

26. Official Boats: The race committee boat will be displaying the KBSC burgee. Official race committee boats will be marked with a green and white flag. These are designated as an “obstruction” and must be avoided at all times.

27. Prizes:

27.1. Weekly and Series Awards and Trophies.






- 1 to 4 starters 1st place
- 5 to 7 starters 1st and 2nd place
- 8 plus starters 1st, 2nd and 3rd place

27.2. Consistency and club championship series.

- 1 to 5 starters 1st and 2nd place
- 6 plus starters 1st, 2nd and 3rd place

28. Disclaimer of Liability: Competitors compete in club racing entirely at their own risk. See Rule 4, decision to race. The organising authority will not accept any liability for material damage or personal injury or death sustained in conjunction with or prior to, during or after club racing.

29. Insurance: Each participating boat shall be insured with valid third party liability insurance with a minimum cover of \$10 000 000 or the equivalent. A certificate of conformity for such cover must be supplied to the club prior to entering your first club race, along with confirmation of a current registration with the Department of Transport where applicable. Any renewals that fall due during the season must be updated with the club office once paid. No boat is to compete in any club event without having current insurance cover.

	DIVISION 1
	DIVISION 2
	DIVISION 3, JaM, OTB
	Catamarans
	Juniors

Supplementary Extended Bay Race Sailing Instructions

1. **Nominations:** As per SI 11. To be valid the entry must be accompanied by the nomination fee and contain an accurate crew list in writing. The crew may be updated in writing at the race control office or start tower prior to the start or by radio at the radio check. The relevant Safety Category and any additions to your class must be adhered to, to be a valid competitor.
2. **Start Line:** Shall be an imaginary line between the KBSC race control tower and the outer end of the Club Mooring Marker (yellow cross). Boats must pass between the jetty and the outer Mooring Marker in a West to East direction to have started correctly.
3. **Finish Line:** As per SI 14
4. **Starting Procedure:**
5. T4.1 Warning Signal: 10 minutes to the start a Red light is displayed at the Race Control Tower.
6. T4.2 Preparatory Signal: 5 minutes before the start the red light is extinguished and an orange light is displayed.
7. T4.3 Start: The Orange light extinguished and green light is displayed.
8. T4.4 Not applicable.
9. Not applicable.

Radio Schedule:

- 9.1 A radio check must be performed and acknowledged approx. 20 minutes prior to the warning signal with KBSC start tower or a nominated competing yacht.
- 9.2 A listening watch must be kept for the duration of the race, on VHF Channel 72
- 9.3 The first scheduled radio check will be 4 hours after the start at 10 minutes past the hour.
- 9.4 Radio checks will continue to be made every 4 hours until the completion of the race.
10. Notice of Race for individual series/race can include or supersede these instructions.
11. Failure to comply with these regulations will make your boat ineligible to race.
12. The time limit for the first boat in each fleet to finish Extended Bay races shall be 1630hrs. Subsequent finishers are required to finish within 60 minutes of the first. Boats failing to finish within this time will be scored "Did Not Finish" without a hearing. This changes rule 35, A4 and A5.



JB
SAIL REPAIRS

SERVICING THE SOUTHWEST
BUNBURY TO AUGUSTA

John Bell
PROPRIETOR

Mobile: 0419 674 066
Email: jb_sails@hotmail.com

Supplementary Twilight Sailing Instructions



T1. Nominations: All boats must nominate at the race control office by signing the 'Sign On' sheet prior to the 10-minute warning signal. This is a safety requirement and any boat failing to nominate will be deemed not to be racing and will be scored a DNS. Any nomination fee must be paid prior to racing, or for boats leaving from other locations, 1 hour after crossing the finish line to be eligible to score points. Skippers can nominate for which ever fleet their boat is most suited to. e.g. Some S80s may choose to start with fleet 1 as they are not part of the 'serious' Saturday racing fleet. Handicaps will be applied across the three fleets with one set of results (first, second and third) being acknowledged at presentations.

T2. Start Line: Shall be an imaginary line between the KBSC race control tower and a day buoy placed outside the outer club Mooring Marker (yellow cross marker). Boats must pass between the outer Mooring Marker and day buoy in a West to East direction to have started correctly.

Start Sequence: There will be three starts, with the first at 1755hrs.

1755hrs - Fleet 1: Division 3 and Cruising Boats

1800hrs - Fleet 2: Division 2

1805hrs - Fleet 3: Division 1

Start signals (may be accompanied by sound signals also)

- (1745hrs) 10 minute warning – Red light displayed on the start tower
- (1750hrs) 5 minute preparatory signal – Red light extinguished and orange light displayed
- (1755hrs) Start for 1st fleet – green signal displayed (for 4 minutes)
- (1759) Preparatory signal for 2nd fleet – green extinguished and amber displayed 1 minute before start.
- (1800hrs) Start for 2nd fleet - green signal displayed (for 4 minutes)
- (1804hrs) Preparatory signal for 3rd fleet – amber light displayed 1 minute before start.
- (1805hrs) Start for 3rd fleet – green light displayed

Course: A single course will be sailed by all fleets and is available at registration.

Note: Start times will vary at the beginning and end of the season. See the race schedule for details.

T3. Finish Line: As Per SI 14.

- T4. Finishing Declaration:** Passing through the finish line is a declaration that the boat has sailed the correct course, with no infringements of the RRS.
- T5. Equipment:** All twilight racing is jib and main (JAM), with no change of sails to be made unless reefing or changing "down" for safety reasons.
- T6. Shortening Courses:** Courses can be shortened by a race committee boat giving verbal instructions at the mark. The rescue boat may display code flag S. After rounding this mark all boats shall proceed to mark 8 which is to be rounded to starboard and go direct to the finish.
- T7. Time Limit:**
- T8.1** All racing is to be completed during daylight hours to ensure compliance with DPI regulations. Any boat that has not finished prior to the gazetted time, which will vary seasonally, will be scored Did Not Finish without a hearing.
- T8.2** No Boat is to remain sailing on the bay after the gazetted daylight hours expire unless they carry and operate navigation lights in accordance with regulation 3.23 of Yachting Australia Special Regulation Part 1.
- T8.3** On Wednesday twilight races any boats not finishing within 75minutes of their start time will be scored Did Not Finish without a hearing.
- T8. Safety:** OTB crew must wear an approved PFD at all times. All other boats are to ensure that they have sufficient PFD's for all people aboard. Any boat with non-compliant safety rails and lines must have all crew wearing PFD's during sailing.
- T9. Sailing a proper Course:** When overlapped with another boat a leeward boat shall not cause a windward boat to alter her course so as to sail above her proper course.
- T10. Overtaking:** Except when close hauled, when overtaking within 2 boat lengths, the overtaking boat shall pass to leeward of the other boat.

Special Rules/Considerations

Yachts must pass to leeward of another they are passing if that yacht started in an earlier fleet.



BRIAN & DIANNE ALLEN

HENTYVIEW VINEYARD

**No. 11 THE DRESS CIRCLE
HENTY, DARDANUP WA 6236**

P/F: 08 9728 0028

M: 041 7962204

HENTYVIEW_VINEYARD@BIGPOND.COM

WWW.HENTYVIEW.COM

General Information

- G1. Boat Registration:** All new boats to the club must register by completing a boat registration form, available from the KBSC Race control office. Thereafter the registration for each season can be completed by filling in the details on the race nomination form.
- G2. Use of Facilities:** Boat owners who use club facilities, launching, retrieving, jetty, mooring area and hardstand must be full members of the club. Cruisers on club moorings will not be winched into the water without this confirmation being supplied.
- G3. Tractors:** Only approved senior members are to drive the club tractors.
- G4. Hardstand Mooring and Winch Fees:** See the "Mooring, Hardstand and Winch Policy and fees" for 2018/2019.
- G5. Membership fees:** See the schedule of fees elsewhere in the current year KBSC season programme.
- G6. Championship Series:** Will use the current years VYC yardsticks where required.
- G7. Handicap System:** The Performance Based System the club uses has been adjusted slightly for the coming season. Due to the closeness of fleets over the past few seasons a less severe deduction system is to be used.
- G7.1 Sailors should also note that the following: Both first and last boats depending on the number of finishers have their handicaps adjusted each week as per previous seasons. This is to prevent handicap creep against boats that are not sailing on a regular basis.
- G7.2 ALL monohull boats are handicapped against the club's scratch boat which has a handicap of 1.0% at the start of the season. This enables boats to move between fleets without the need to change their handicap, although moving between fleets is not encouraged.
- G7.3 The PBS applies to all series other than any Championship series.
- G7.4 Consistency racing under the PBS includes the club & ocean racing series. All series are part of the final overall consistency results.
- G8. Boats Changing Fleets:** Any boat temporarily crossing over into another fleet (such as sailing JaM instead of Division 1) will be penalised 20% on handicap so as not to disadvantage the regular fleet.

The Penalty system will be used as follows.

1-4 finishes	
	+0.005 penalty for 1st place
	-0.005 adjustment for last place
5-7 finishes	
	+0.010 penalty for 1st place
	+0.005 penalty for 2nd place
	-0.010 adjustment for last place
	-0.005 adjustment for 2nd last place
8+ finishes	
	+0.015 penalty for 1st place
	+0.010 penalty for 2nd place
	+0.005 penalty for 3rd place
	-0.015 adjustment for last place
	-0.010 adjustment for 2nd last place
	-0.005 adjustment for 3rd last place

How it works:

Your PBS handicap is say 0.85. This is a % - Your **actual** finishing time is multiplied by this % to give you a **corrected** finishing time. If your **corrected** time is a winning time (+8 finishes) your new handicap is 0.865. If last (i.e. you sailed a crap race) it would be 0.835 and so on.

What does it mean?

If Boat 'A's handicap is 0.865 & Boat 'B's is 0.840 - 'A' must beat 'B' by 0.025 or more realistically to think in MINUTES 'A' must beat 'B' by 2.5 min in a 100min race or 5min in a 200min race or 1.25min in a 50 min race etc. i.e. – the length of the race is irrelevant as your handicap is a %. i.e. **0.01 represents 1 minute per 100 minutes of racing**. This makes it simple to keep a watch on all those boats behind you, or if any, in front of you.

KBSC CLUB MARK COORDINATES						
Bay Marks October 2019						
1	33*	18	870	115*	38	890
2	33*	18	560	115*	38	820
3	33*	18	400	115*	40	010
4	33*	18	670	115*	39	560
5	33*	17	680	115*	39	370
6	33*	18	800	115*	39	390
8	33*	19	040	115*	38	880
11	33*	17	690	115*	39	850
F	33*	18	050	115*	39	190
G	33*	18	060	115*	39	080
Finish	33*	19	010	115*	38	720
Armstrong	33*	19	070	115*	39	150
Yellow X	33*	18	950	115*	38	740
A	33*	18	950	115*	39	300
B	33*	18	950	115*	39	200
C	33*	18	670	115*	39	090
D	33*	18	670	115*	39	180
E	33*	18	470	115*	39	200
H	33*	17	690	115*	38	910
Ocean Marks October 2019						
7	33*	18	750	115*	37	500
9	33*	18	750	115*	36	050
10	33*	17	700	115*	37	900
12	33*	21	200	115*	34	760

TAYCOT

SUBDIVISION & PROJECT MANAGEMENT



‘A family owned and operated consultancy proudly delivering residential subdivisions throughout the South West.’

Kevin Coote JP
Director

📞 0417 187 261 📠 (08) 9791 5511
✉ kevin@taycot.com.au

Travis Taylor BEng
Development Manager

📞 0407 426 712 📠 (08) 9791 5511
✉ travis@taycot.com.au

(08) 9791 5511

PO Box 559 Bunbury WA 6231

admin@taycot.com.au

www.taycot.com.au

JEVTELLE PTY LTD TRADING AS TAYCOT - ABN 93 109 593 615

BOATING/JINKER/TRAILER STORAGE & RUBBISH DISPOSAL POLICY

Subject to the following, paid up senior (including life) or junior members may store their boat, jinker and/or trailer within the designated boat storage area at KBSC for the prescribed fee.

Note that boats, trailers and jinkers are left at KBSC at the owner's risk. KBSC is not responsible for any loss or damage.

1. The boat must be listed on the KBSC boat register.
2. The appropriate storage fee must be paid.
3. The boat's name, owner and phone number must be clearly displayed on the boat.
4. All trailers/jinkers are to have the boat owners name and telephone number clearly painted on the trailer/jinker.
5. All trailers/jinkers are to be in good repair and should have appropriate steering.
6. Tyres, rims, batteries, chemicals, solvents etc cannot be disposed of at KBSC and should be removed from the Club by the boat owner.
7. Boat owners are responsible for ensuring that any antifouling or paint removed is done in a way that minimizes hazardous dust or sludge and that any resultant waste material is collected and removed from the club.
8. Props, stands, jacks, scaffolding, planks, ladders, and other items are not to be left at KBSC unless they are in active use for boat maintenance.
9. The boat storage area is not to be used for major refits or as a boat building yard, although maintenance work is permitted.
Any waste created must be disposed of by the boat owner on a daily basis.
10. To discourage vandalism, boat owners are encouraged to remove flares, first aid kits, knives, alcohol and any other loose items from their boats when on 'the hardstanding'.



FEE STRUCTURES

SCHEDULE OF MEMBERSHIP FEES (GST inclusive) 2019/2020

Payment to be made at time of Application

Membership Year July 1, 2019 to June 30, 2020

All applications are presented for endorsement at the following Committee meeting.

Associate member is the spouse of senior member, who participates in normal club racing.

CATEGORY	Rate/Year	CATEGORY	Rate/year
Senior	\$513.00	Student	\$187.00
Crew	\$311.00	Junior	\$130.00
Associate	\$242.00	Reciprocal	\$233.00
Social (Sailing fees apply: Sat \$15, Twilight \$10)	\$125.00	Family Associate (2 adults + juniors)	\$884.00
Youth (18-21 years)	\$310.00	Family Social (2 adults + jnrs)	\$784.00
Plus \$50.00 HOUSE SUPPORT FEE (each) COMPULSORY for all categories except juniors			

Members who require a mooring and/or space on the hardstand, or use of the club winch are advised to read the 'Mooring, Hardstand & Winch Policy & Fees' document which is available from the club or can be downloaded from the club website www.koombanabay.com. All applications for mooring and hardstand must be forwarded through the club office.

Due to the recent trend for yacht clubs to be used as mere storage areas for member's yachts, and to uphold the Objects of the Club "... the promotion and encouragement of the sport of yachting generally, and racing between sailing yachts in particular..." non-participating levies are charged in addition to normal storage and mooring fees.

In broad terms 'participating' is classified as any boat starting any five (5) KBSC club events including twilights and organised social sailing events during the official sailing season for that year.

However, there are other ways in which members participate in club activities apart from sailing i.e. crewing in a rescue or starting boat, doing volunteer work (see club busy bee register) and donations and sponsorship exceeding \$1000.

If any member feels they have been an active participant in the club over the course of the season, despite not having started five events, or if they have been affected by a severe unexpected event preventing them from participating in club activities, then they are welcome to make a written application to the KBSC management committee to be considered as a participating member and have the non-participation levy waved. All applications are presented for endorsement at the following committee meeting.



HARDSTAND MOORING AND STORAGE FEE SCHEDULE

As at 01 July 2019

CATEGORY	PARTICIPATING	NON -PARTICIPATING
	Rate/Year	Rate/Year
Hard stand	\$300.00	\$906.00
Hard stand catamaran over 5m beam	\$390.00	\$1178.00
Off beach sailing dinghy outside 6mths	\$100.00	\$302.00
Off beach sailing dinghy outside 12mths	\$200.00	\$604.00
Sailing dinghy storage under cover	\$200.00	\$604.00
Additional winch movements	\$50.00	\$151.00
Mooring fees	\$250.00	\$755.00



VENUE BOOKING TERMS AND CONDITIONS

Nestled on the shores of the bay, Koombana Bay Sailing Club boasts an absolute beach front location and is a perfect venue to host your dream wedding, conferences, seminars and social functions.

With a variety of options, our hall can accommodate up to 250 people or can be divided into smaller rooms for the more intimate gatherings. Our lawn area overlooking the stunning waters and white sandy beach is ideal for wedding ceremonies, displays and casual gatherings or just enjoying the magnificent sunsets.

Coupled with our outdoor Sailors Bar, we can provide a perfect setting for your function.

Koombana Bay Sailing Club has a number of delegate and wedding packages available or can tailor one to suit.

If you would like further information please contact our functions manager on

Mobile: 0499 023 995, Office: (08) 9791 3914, Email: functions@koombanabay.com

Charges – Inc GST - Current as at 1 st July 2019	
Function room hire (Mon to Thu)	\$175 per area or Full Venue (5) - \$831 - Includes 5% Discount All Inside Areas (3) - \$499 - Includes 5% Discount
Function room hire (Fri, Sat, Sun & Public Holidays)	\$250 per area or Full Venue (5) - \$1188 - Includes 5% Discount All Inside Areas (3) - \$713 - Includes 5% Discount
PA & Microphone	\$75.00
Data projector	\$75.00
Whiteboard	\$25.00
Tablecloths	\$12.00 each
Gas BBQ	\$55.00
Extension of license (if required)	\$250.00
Additional Bar Staff	Hourly Fee
Additional cleaning (if required)	Hourly Fee

All bookings require a \$500.00 venue hire bond to confirm the date.

Discounts apply for KBSC Senior Members.





[illegible]



26 Clifford St, Bunbury
3/271 Berkshire Road, Forrestfield

www.naratraining.com.au

1800 487 246





PERKINS BUILDERS

Bunbury | Perth

The largest regionally based builder in WA.

(08) 9721 7300 | (08) 9240 7701

www.perkinsbuilders.com.au